



THE COMPOSITE EXPERT...

www.aeroncomposite.com



FIBERGLASS HANDRAIL & STAIRWAY SYSTEMS

FIBERGLASS HANDRAIL & STAIRWAY SYSTEMS

AERON Hand Rail Systems offer now various solution for different situations. All systems are designed and tested according to the relevant standards. Systems are designed to satisfy both the End User in terms of performance as well as the Contractor in term of ease of installation and costs.

We provide :

- » Design/costing services
- » Applicable test certificates
- » All components in kit form
- » Site supervision if required

Advantages of AERON FRP Handrail Systems :

- » Modular for ease of installation
- » Lightweight to increase tempo of installation
- » Strong enough to take load
- » Corrosion resistant
- » Thermally non conductive - Perform well in subzero temperatures
- » Fire Retardant
- » UV Protection
- » Electronically Transparent

Basic Design parameters include :

- » Max stanchion centre to centre spacing of 1500 mm.
- » Min height above walking surface of 1100mm.
- » A minimum service load of min=300N/m x max distance (m) between stanchions

Order details required :

- » General layout drawing or sketch
- » Mounting preference: side mounted, top mounted or imbedded.
- » **Colour** : Normally yellow or grey
- » Hand rail height
- » Design criteria

Material :

Fibre Reinforced
Composites

3 Systems Available :

Heavy Duty
Standard Duty
Economy

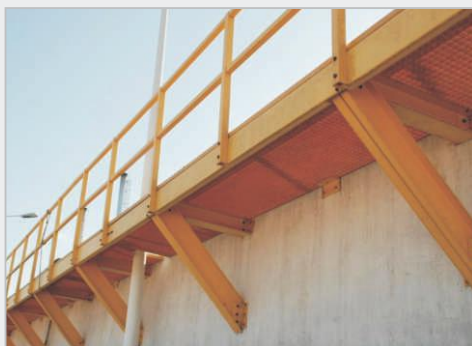
Handrail configuration

All systems comprise of the following basic elements:

- » Hand rail / Top rail
- » Knee rail / Mid rail
- » Toe plate
- » Stanchion / Vertical Post
- » Floor fixing mechanism
- » Connectors / Splice sections

Design Criteria

AERON Handrail Sytems are designed and tested for applicable Standards.



FIBERGLASS HANDRAIL & STAIRWAY SYSTEMS

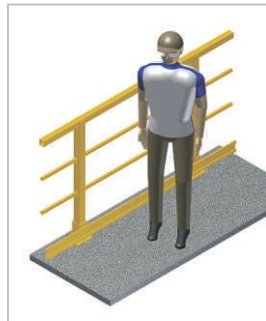
Assembly & Mounting Details For Handrails



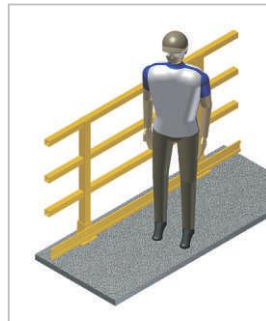
**ASSEMBLY MODEL :
ASH-101**



**ASSEMBLY MODEL :
ASH-102**



**ASSEMBLY MODEL :
ASH-103**



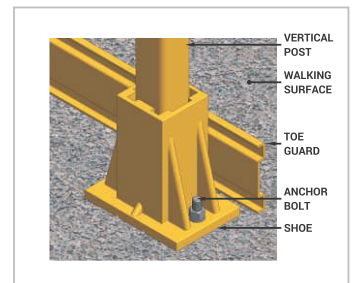
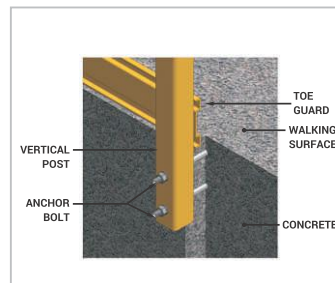
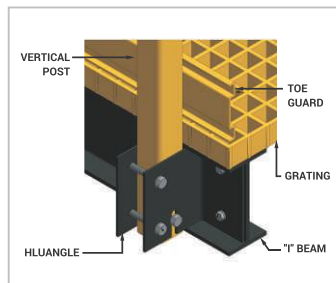
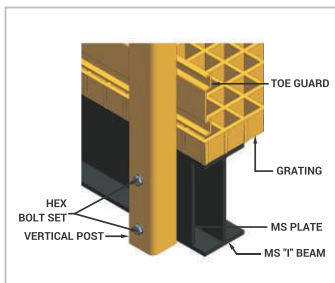
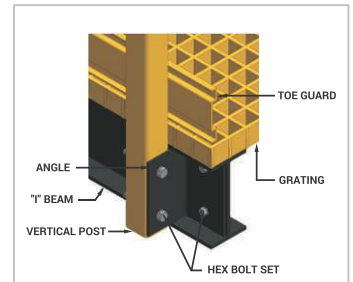
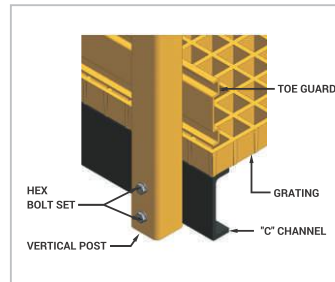
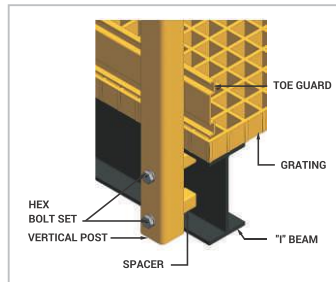
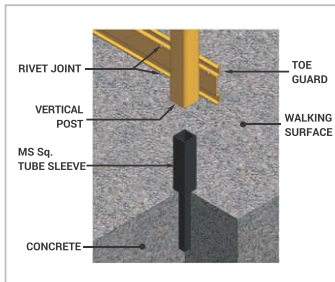
**ASSEMBLY MODEL :
ASH-104**



**ASSEMBLY MODEL :
ASH-105**

Contact Our Sales Team For Customized Specification

Vertical Post Mounting Details



Other Applications Of Handrail & Ladder



Crossover



Elevated Ramp With Handrails



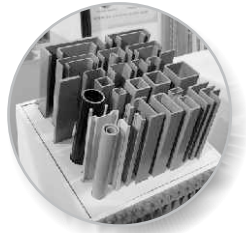
Guard Rails



Platform Railing



**Fiberglass
Cable Tray**



**Fiberglass
Structural Profiles**



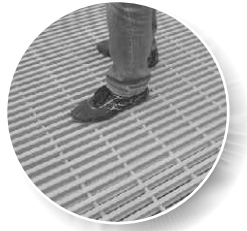
**Fiberglass
Ladder**



Trefoil Clamp



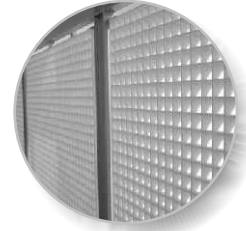
**Fiberglass
Handrails**



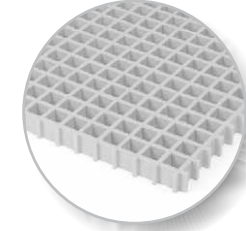
**Fiberglass
Pultruded Gratings**



**Fiberglass
Canopy**



**Fiberglass
Fencing**



**Fiberglass
Molded Gratings**



**Fiberglass
Poles & Mast**



THE COMPOSITE EXPERT...

AERON COMPOSITE PVT. LTD.

Reg. Off.: Block No. 496/P, Tajpur Road, Sarkhej Bawala Highway,
Changodar - 382213 Tal. Sanand, Ahmedabad, Gujarat - INDIA.
T : +91 79 6525 8500 | F : +91 79 26561238 | M : +91 99099 88266
E : info@aeroncomposite.com | W : www.aeroncomposite.com



Scan to Save

